

Berger Realty

Since 1928



Berger Realty, Inc.
3160 Asbury Avenue
Ocean City, NJ 08226
1-877-237-4371 / 609-399-0076
info@bergerrealty.com



1 SPRUCE STREET
Penns Grove Borough, NJ 08069

Asking \$239,000.00

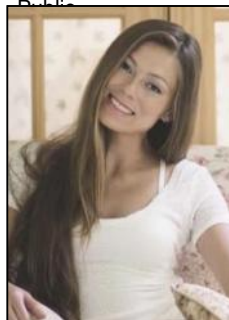


COMMENTS

LARGE COMPLETELY REMODELED 4 BEDROOM HOME WITH LIVING ROOM, DINING ROOM, EAT-IN-KITCHEN, FAMILY ROOM, MASTERBEDROOM, BASEMENT, FENCED YARD AND MORE! AVAILABLE IMMEDIATELY!

PROPERTY DETAILS

Exterior	OutsideFeatures	ParkingGarage	OtherRooms
Vinyl	Fenced Yard	None	Dining Room
	Patio		Eat In Kitchen
			Laundry/Utility Room
			Recreation/Family
AppliancesIncluded	Basement	Heating	HotWater
Dishwasher	6 Ft. or More	Head Gas-Natural	Gas
Gas Stove	Room	Hot Water	
Microwave	Full		
Refrigerator			
Self Cleaning Oven			
Water	Sewer		
Public	Public Sewer		



Ask for Margarita Kobilianets
Berger Realty Inc
3160 Asbury Avenue, Ocean City
Call: 609-399-0076
Email to: mak@bergerrealty.com

