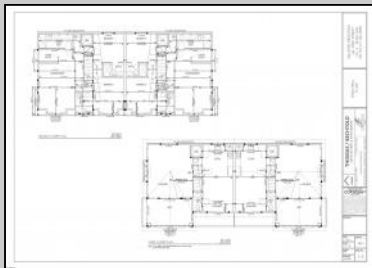
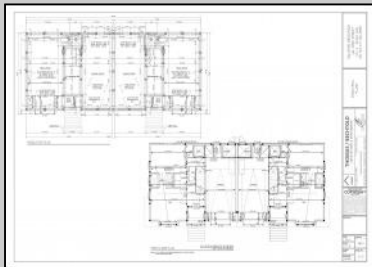
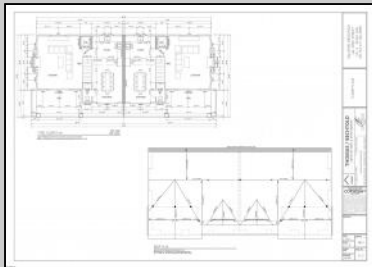
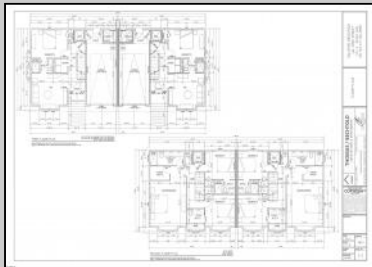




4301 Central Ave
 Sea Isle City, NJ 08243

Asking \$2,199,000.00



146 43RD STREET

43RD STREET ELEVATION

WORKING DRAWINGS
 SEPTEMBER 11, 2024

BUILDING DATA		REV. PHASE	
NO. INTERNATIONAL RESIDENTIAL CODE SECTION		NO.	DATE
JOB GROUP - RB		1	11/11/23
CONSTRUCTION TYPE - SL		2	11/11/23
TOTAL SQ. FT. - 4482 SF		3	11/11/23
NO. OF PRINCIPAL LEVELS - 3		4	11/11/23
BUILDING CODE REFERENCE - IBC 2018		5	11/11/23
PROJECT NO. - 43		6	11/11/23
DATE 1,000 ELEVATION - 6/2		7	11/11/23
		8	11/11/23
		9	11/11/23
		10	11/11/23
		11	11/11/23
		12	11/11/23
		13	11/11/23
		14	11/11/23
		15	11/11/23
		16	11/11/23
		17	11/11/23
		18	11/11/23
		19	11/11/23
		20	11/11/23
		21	11/11/23
		22	11/11/23
		23	11/11/23
		24	11/11/23
		25	11/11/23
		26	11/11/23
		27	11/11/23
		28	11/11/23
		29	11/11/23
		30	11/11/23
		31	11/11/23
		32	11/11/23
		33	11/11/23
		34	11/11/23
		35	11/11/23
		36	11/11/23
		37	11/11/23
		38	11/11/23
		39	11/11/23
		40	11/11/23
		41	11/11/23
		42	11/11/23
		43	11/11/23
		44	11/11/23
		45	11/11/23
		46	11/11/23
		47	11/11/23
		48	11/11/23
		49	11/11/23
		50	11/11/23
		51	11/11/23
		52	11/11/23
		53	11/11/23
		54	11/11/23
		55	11/11/23
		56	11/11/23
		57	11/11/23
		58	11/11/23
		59	11/11/23
		60	11/11/23
		61	11/11/23
		62	11/11/23
		63	11/11/23
		64	11/11/23
		65	11/11/23
		66	11/11/23
		67	11/11/23
		68	11/11/23
		69	11/11/23
		70	11/11/23
		71	11/11/23
		72	11/11/23
		73	11/11/23
		74	11/11/23
		75	11/11/23
		76	11/11/23
		77	11/11/23
		78	11/11/23
		79	11/11/23
		80	11/11/23
		81	11/11/23
		82	11/11/23
		83	11/11/23
		84	11/11/23
		85	11/11/23
		86	11/11/23
		87	11/11/23
		88	11/11/23
		89	11/11/23
		90	11/11/23
		91	11/11/23
		92	11/11/23
		93	11/11/23
		94	11/11/23
		95	11/11/23
		96	11/11/23
		97	11/11/23
		98	11/11/23
		99	11/11/23
		100	11/11/23

THOMAS / BECHTOLD ARCHITECTURE & ENGINEERING
 1701 CENTRAL AVENUE, SEASIDE CITY, NJ 08243
 WWW.TOMASBECHTOLD.COM
 REGISTERED PROFESSIONAL ARCHITECT - STATE OF NEW JERSEY
 LICENSE NO. 12421

COPYRIGHT

COMMENTS

Get in for Summer 2025! Welcome to this fantastic new construction on 43rd street at the corner of 43rd and Central (North Unit). The interior of this home has it all! This house has a unique kitchen layout, with open shelving, and a wet bar. Super spacious, 5 bedrooms 4 1/2 bathrooms, high ceilings, Smart toilet in the master bath, LVT throughout the house, an EV hookup in the garage - this beach home has everything you need to enjoy summers at the Shore. The exterior is wrapped in spectacular Hardie Board siding. Park your car and don't move it! Walk to the beach, promenade, churches, nightlife, restaurants and Fish Alley - all within minutes of your front door. Watch the sunsets from your spacious front deck! Very few new constructions are available. Get in soon and choose some of your finishes.

PROPERTY DETAILS

ParkingGarage	AppliancesIncluded	Heating	Cooling
None	Dishwasher	Gas-Natural	Central
	Dryer		
	Gas Stove		
	Microwave		
	Refrigerator		
	Self Cleaning Oven		
	Washer		



Sewer
 Public Sewer
 James Gray Haenn
 Berger Realty Inc
 3160 Asbury Avenue, Ocean City
 Call: 609-399-0076
 Email to: jgh@bergerrealty.com

