



1401 New
Linwood, NJ 08221

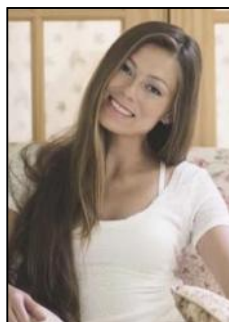
Asking \$957,000.00



COMMENTS

Prime office building for sale. Building currently 4,566 sf available for owner occupancy. Building can be made 100% available for owner/buyer. Building has 1 tenant located on the 2nd floor. Building is 6,135+/- sf on 2 floors. Main floor is 2 suites, each 1,717 sf. 2nd floor has 2 suites, each is 1,132 sf. 2 ground floor suites are fit out for medical use and can be combined. The 2nd floor is accessed via stairs. The building has a basement of 1,850+/- sf. On site parking. Signage on New Road. Utilities are separately metered.

PROPERTY DETAILS



Ask for Margarita Kobilianets
Berger Realty Inc
3160 Asbury Avenue, Ocean City
Call: 609-399-0076
Email to: mak@bergerrealty.com

