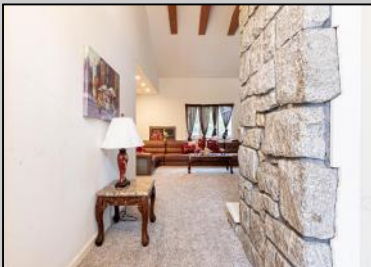




1422 Burleigh
 Cape May Court House, NJ 08210

Asking \$375,000.00



COMMENTS

Welcome to 1422 Burleigh Road, this 3-bedroom, 1.5-bath home is set on a spacious lot in the desirable Cape May Court House area. The property features a functional and well-designed layout, with bright, open living areas and generously sized bedrooms offering ample space and versatility. The lot provides expansive outdoor space suitable for a variety of uses, including recreation or gardening. Conveniently located just minutes from local shops, schools, medical facilities, and Cape May County's beaches, this home offers excellent accessibility while enjoying a tranquil setting. With its practical layout and prime location, this property is an excellent example of comfortable and convenient living in the Cape May area.

PROPERTY DETAILS

ParkingGarage	Heating	Water	Sewer
None	See Remarks	Private	Private

