



2 Birch Ct
 Mays Landing, NJ 08330

Asking \$208,000.00



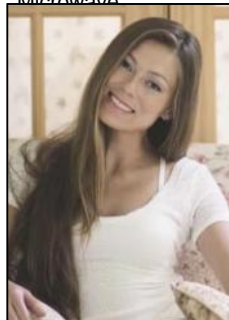
bright MLS

COMMENTS

Welcome to this delightful 3-bedroom, 2-bathroom double wide manufactured home. This well-maintained residence offers a comfortable and spacious living environment. One bedroom is currently being used for a den. An enclosed porch adds for bonus space. The cozy breakfast nook is perfect for your morning coffee or casual meals, pickleball court, tennis courts, and more. ALL Furnishings can be included with an acceptable offer. NO HOA FEES!!! \$560 lot rent.

PROPERTY DETAILS

OutsideFeatures	ParkingGarage	OtherRooms	InteriorFeatures
Pool-In Ground	None	Den/TV Room	Security System
Porch		Eat In Kitchen	Smoke/Fire Alarm
Porch Screened			Storage
Shed			Walk In Closet
Sidewalks			Whirlpool
AppliancesIncluded	AlsoIncluded	Basement	Heating
Burglar Alarm	See Remarks	Crawl Space	Gas-Natural
Dishwasher			
Dryer			
Electric Stove			
Microwave			



Ask for Margarita Kobilianets
 Berger Realty Inc
 3160 Asbury Avenue, Ocean City
 Call: 609-399-0076
 Email to: mak@bergerrealty.com

