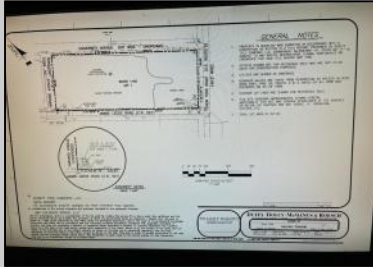


Berger Realty

Since 1928



Berger Realty, Inc
1330 Bay Avenue
Ocean City, NJ 08226
609-391-1330/609-391-1300
info@bergerrealty.com



ROUTE 9 & JIMMIE LEEDS ROAD
Galloway Township, NJ 08205

Asking \$649,900.00



SJSRMLS

COMMENTS

PRIME RESIDENTIAL OR COMMERCIAL DEVELOPMENT SITE ON 3.5 ACRES WITH GREAT LOCATION ON CORNER OF ROUTE 9 AND JIMMIE LEEDS ROAD ADJACENT TO RENOWNED SEAVIEW COUNTRY CLUB. PROPERTY HAS 250 FT FRONTAGE ON ROUTE 9 WITH 625 FT FRONTAGE ON JIMMIE LEEDS ROAD AND ALL UTILITIES. GREAT SITE FOR RESIDENTIAL TOWNHOUSES OR OFFICE, RESTAURANT, BANK, PHARMACY, RETAIL STORE, NURSING, ASSISTED LIVING OR OTHER RESIDENTIAL OR COMMERCIAL USE.

PROPERTY DETAILS



Ask for Michael Wallitsch
Berger Realty Inc
1330 Bay Avenue, Ocean City
Call: 609-391-1330
Email to: mow@bergerrealty.com

