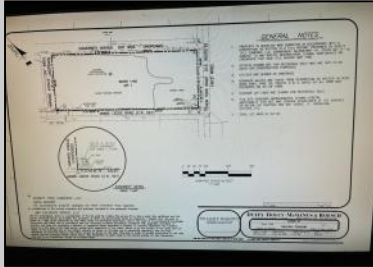


# Berger Realty

Since 1928



Berger Realty, Inc.  
3160 Asbury Avenue  
Ocean City, NJ 08226  
1-877-237-4371 / 609-399-0076  
info@bergerrealty.com



**ROUTE 9 & JIMMIE LEEDS ROAD**  
Galloway Township, NJ 08205

Asking \$649,900.00



SJSRMLS

#### COMMENTS

PRIME RESIDENTIAL OR COMMERCIAL DEVELOPMENT SITE ON 3.5 ACRES WITH GREAT LOCATION ON CORNER OF ROUTE 9 AND JIMMIE LEEDS ROAD ADJACENT TO RENOWNED SEAVIEW COUNTRY CLUB. PROPERTY HAS 250 FT FRONTAGE ON ROUTE 9 WITH 625 FT FRONTAGE ON JIMMIE LEEDS ROAD AND ALL UTILITIES. GREAT SITE FOR RESIDENTIAL TOWNHOUSES OR OFFICE, RESTAURANT, BANK, PHARMACY, RETAIL STORE, NURSING, ASSISTED LIVING OR OTHER RESIDENTIAL OR COMMERCIAL USE.

#### PROPERTY DETAILS



Ask for John Sweeney  
Berger Realty Inc  
3160 Asbury Avenue, Ocean City  
Call: 609-399-0076  
Email to: [jjjs@bergerrealty.com](mailto:jjjs@bergerrealty.com)

