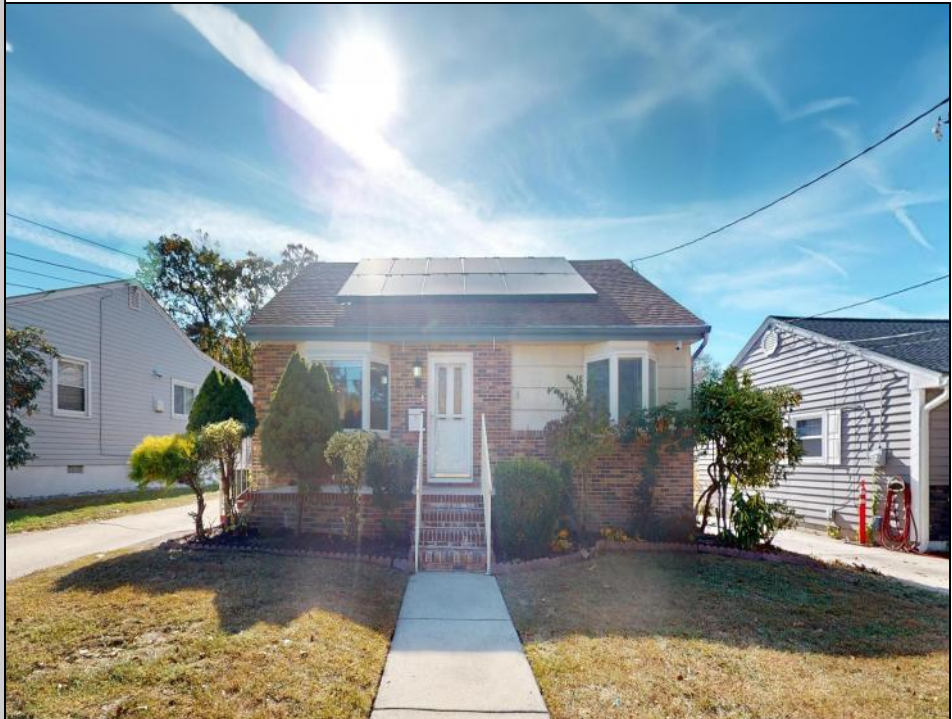
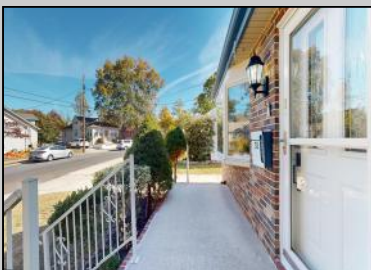




**31 Shady
 Absecon, NJ 08201**

Asking \$400,000.00



COMMENTS

Welcome to your new Stunningly renovated oasis on 31 Shady Ln! This 4 bed 2 Bath home with a large bedroom on the 1st floor boasts modern finishes and upgrades throughout, making it perfect for today's lifestyle. The HUGE detached garage is a MUST SEE located on just over a half an acre of property. Conveniently located just a few miles from Smithville Village, you'll have easy access to a variety of shops and restaurants, in addition to Wawa and ShopRite being very close by. This home is Walking Distance to Absecon train Station and Pitney Park. Just a few minutes away from Garden State Parkway and AC Expressway entrance. 20 minutes to multiple beaches and boardwalks. 1 hour to Philly. Enjoy the best of both worlds—peaceful living with vibrant community amenities nearby! Don't miss your chance to make this exceptional property your own!

PROPERTY DETAILS

OutsideFeatures Deck Porch	ParkingGarage Detached Garage	OtherRooms Eat In Kitchen Laundry/Utility Room Storage Attic	AppliancesIncluded Dryer Refrigerator Washer
Basement Crawl Space	Heating Electric	Water Public	Sewer Public Sewer



Ask for Patricia Moss
 Berger Realty Inc
 3160 Asbury Avenue, Ocean City
 Call: 609-399-0076
 Email to: tcm@bergerrealty.com

