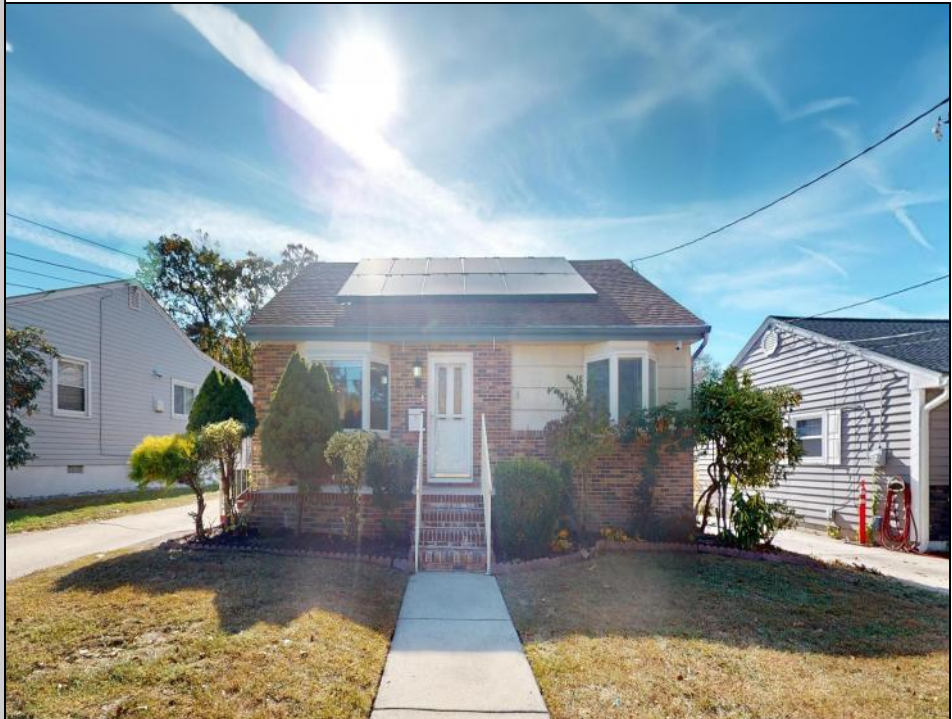




**31 Shady  
 Absecon, NJ 08201**

**Asking \$400,000.00**



**COMMENTS**

Welcome to your new Stunningly renovated oasis on 31 Shady Ln! This 4 bed 2 Bath home with a large bedroom on the 1st floor boasts modern finishes and upgrades throughout, making it perfect for today's lifestyle. The HUGE detached garage is a MUST SEE located on just over a half an acre of property. Conveniently located just a few miles from Smithville Village, you'll have easy access to a variety of shops and restaurants, in addition to Wawa and ShopRite being very close by. This home is Walking Distance to Absecon train Station and Pitney Park. Just a few minutes away from Garden State Parkway and AC Expressway entrance. 20 minutes to multiple beaches and boardwalks. 1 hour to Philly. Enjoy the best of both worlds—peaceful living with vibrant community amenities nearby! Don't miss your chance to make this exceptional property your own!

**PROPERTY DETAILS**

OutsideFeatures Deck Porch	ParkingGarage Detached Garage	OtherRooms Eat In Kitchen Laundry/Utility Room Storage Attic	AppliancesIncluded Dryer Refrigerator Washer
Basement Crawl Space	Heating Electric	Water Public	Sewer Public Sewer



Ask for Matthew Bader  
 Berger Realty Inc  
 3160 Asbury Avenue, Ocean City  
 Call: 609-399-0076  
 Email to: mhb@bergerrealty.com  
 http://www.BADERCOLLINS.com

