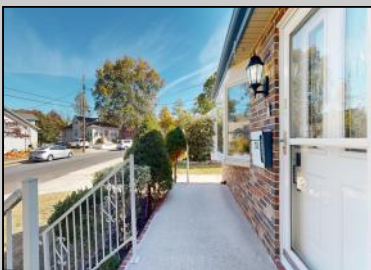




**31 Shady
Absecon, NJ 08201**

Asking \$400,000.00



COMMENTS

Welcome to your new Stunningly renovated oasis on 31 Shady Ln! This 4 bed 2 Bath home with a large bedroom on the 1st floor boasts modern finishes and upgrades throughout, making it perfect for today's lifestyle. The HUGE detached garage is a MUST SEE located on just over a half an acre of property. Conveniently located just a few miles from Smithville Village, you'll have easy access to a variety of shops and restaurants, in addition to Wawa and ShopRite being very close by. This home is Walking Distance to Absecon train Station and Pitney Park. Just a few minutes away from Garden State Parkway and AC Expressway entrance. 20 minutes to multiple beaches and boardwalks. 1 hour to Philly. Enjoy the best of both worlds—peaceful living with vibrant community amenities nearby! Don't miss your chance to make this exceptional property your own!

PROPERTY DETAILS

OutsideFeatures	ParkingGarage	OtherRooms	AppliancesIncluded
Deck	Detached Garage	Eat In Kitchen	Dryer
Porch		Laundry/Utility Room	Refrigerator
		Storage Attic	Washer
Basement	Heating	Water	Sewer
Crawl Space	Electric	Public	Public Sewer



Ask for Lori McCloskey
Berger Realty Inc
109 E 55th St., Ocean City
Call: 609-399-4211
Email to: lam@bergerrealty.com

