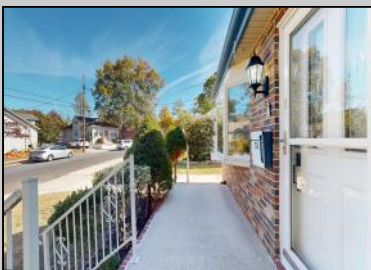




**31 Shady  
Absecon, NJ 08201**

**Asking \$400,000.00**



### COMMENTS

Welcome to your new Stunningly renovated oasis on 31 Shady Ln! This 4 bed 2 Bath home with a large bedroom on the 1st floor boasts modern finishes and upgrades throughout, making it perfect for today's lifestyle. The HUGE detached garage is a MUST SEE located on just over a half an acre of property. Conveniently located just a few miles from Smithville Village, you'll have easy access to a variety of shops and restaurants, in addition to Wawa and ShopRite being very close by. This home is Walking Distance to Absecon train Station and Pitney Park. Just a few minutes away from Garden State Parkway and AC Expressway entrance. 20 minutes to multiple beaches and boardwalks. 1 hour to Philly. Enjoy the best of both worlds—peaceful living with vibrant community amenities nearby! Don't miss your chance to make this exceptional property your own!

### PROPERTY DETAILS

OutsideFeatures	ParkingGarage	OtherRooms	AppliancesIncluded
Deck	Detached Garage	Eat In Kitchen	Dryer
Porch		Laundry/Utility Room	Refrigerator
		Storage Attic	Washer
Basement	Heating	Water	Sewer
Crawl Space	Electric	Public	Public Sewer



Ask for James Monteleone  
Berger Realty Inc  
109 E 55th St., Ocean City  
Call: 609-399-4211  
Email to: jfm@bergerrealty.com

