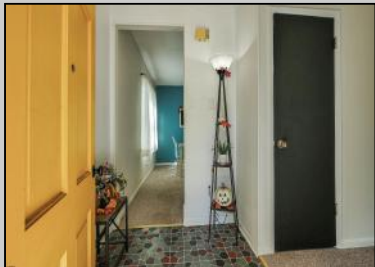




2037 Shore
 Linwood, NJ 08221

Asking \$350,000.00



COMMENTS

Highest and Best by October 14th at 5:00. Industrial Farmhouse style home on spacious lot. There are 3 Bedrooms (one of the bedrooms is on the 1st floor) and 2 1/2 baths. The 1st floor includes entrance foyer, large living room and dining room, sun filled kitchen, laundry room, powder room and mud room. 2nd floor includes 2 bedrooms (very large main suite) and 2 full baths, plus Dutch door to upper level deck perfect for relaxing with your morning coffee. Walk up stairs to huge attic with lots of possibilities. Partial unfinished basement for extra storage. Outside includes large storage shed and white vinyl fencing along the front of the home. Brand new roof. Location is close to Seaview Avenue School, Bike Path and just a few miles to many beautiful beaches. Ready for a quick closing. Easy to show (go and show).

PROPERTY DETAILS

Exterior	OutsideFeatures	ParkingGarage	OtherRooms
Cedar	Curbs	None	Dining Room
	Deck		Laundry/Utility Room
	Shed		Storage Attic
	Sidewalks		

InteriorFeatures	AppliancesIncluded	Basement	Heating
Storage	Disposal	Partial	Forced Air
	Dishwasher	Unfinished	Gas-Natural
	Dryer		



Ask for Thomas Horan
 Berger Realty Inc
 1330 Bay Avenue, Ocean City
 Call: 609-391-1330
 Email to: tph@bergerrealty.com

