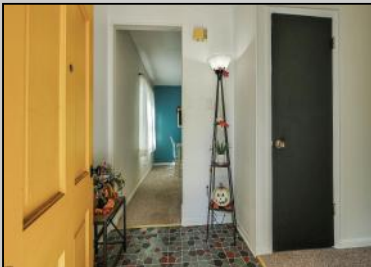




2037 Shore
Linwood, NJ 08221

Asking \$350,000.00



COMMENTS

Highest and Best by October 14th at 5:00. Industrial Farmhouse style home on spacious lot. There are 3 Bedrooms (one of the bedrooms is on the 1st floor) and 2 1/2 baths. The 1st floor includes entrance foyer, large living room and dining room, sun filled kitchen, laundry room, powder room and mud room. 2nd floor includes 2 bedrooms (very large main suite) and 2 full baths, plus Dutch door to upper level deck perfect for relaxing with your morning coffee. Walk up stairs to huge attic with lots of possibilities. Partial unfinished basement for extra storage. Outside includes large storage shed and white vinyl fencing along the front of the home. Brand new roof. Location is close to Seaview Avenue School, Bike Path and just a few miles to many beautiful beaches. Ready for a quick closing. Easy to show (go and show).

PROPERTY DETAILS

Exterior	OutsideFeatures	ParkingGarage	OtherRooms
Cedar	Curbs Deck Shed Sidewalks	None	Dining Room Laundry/Utility Room Storage Attic

InteriorFeatures	AppliancesIncluded	Basement	Heating
Storage	Disposal Dishwasher Dryer Electronics Refrigerator Washer	Partial Unfinished	Forced Air Gas-Natural



Call for
Kathy Errickson
Berger Realty Inc
109 E 55th St., Ocean City
Call: 609-399-4211
Email to: kae@bergerrealty.com

