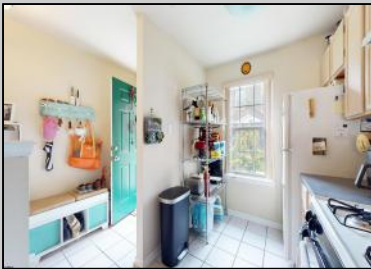




1552 John Adams Court
 Mays Landing, NJ 08330

Asking \$224,900.00



COMMENTS

This condo qualifies for USDA 0% Downpayment Just listed first floor 2 bedroom and 2 full baths condo located in beautiful Mays Landing Village! This home offers an open concept to kitchen with plenty of cabinet space, dining room, and large living room. The owner's suite has a full bathroom, double bowl vanity sinks and walk in closet. This condo has 2 sets of sliding glass doors in the living room and 2nd set in the owner suite that both give you access to the patio. You will enjoy the amenities of Mays Lading Village: pool, hot tub, basketball court, volleyball, playground, landscaping, sprinklers and snow removal. The association fee also includes water and sewer. Mays Landing Village is conveniently located to the GSP, Atlantic City Expressway, shopping. Octoberfest themed Open house Saturday, October 19th from 11 a.m. until 1 p.m. Refreshments and giveaways. Hope to see you there!

PROPERTY DETAILS

Exterior Brick	ParkingGarage None	OtherRooms Dining Area Primary BR on 1st floor	InteriorFeatures Master Bath
Heating Forced Air Gas-Natural	Cooling Central	HotWater Gas	Water Public Water



Ask for Matthew Bader
 Berger Realty Inc
 3160 Asbury Avenue, Ocean City
 Call: 609-399-0076
 Email to: mhb@bergerrealty.com
 http://www.BADERCOLLINS.com

