

# Berger Realty

Since 1928

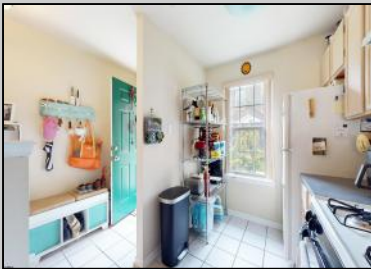


Berger Realty, Inc.  
 3160 Asbury Avenue  
 Ocean City, NJ 08226  
 1-877-237-4371 / 609-399-0076  
 info@bergerrealty.com



1552 John Adams Court  
 Mays Landing, NJ 08330

Asking \$224,900.00



### COMMENTS

This condo qualifies for USDA 0% Downpayment Just listed first floor 2 bedroom and 2 full baths condo located in beautiful Mays Landing Village! This home offers an open concept to kitchen with plenty of cabinet space, dining room, and large living room. The owner's suite has a full bathroom, double bowl vanity sinks and walk in closet. This condo has 2 sets of sliding glass doors in the living room and 2nd set in the owner suite that both give you access to the patio. You will enjoy the amenities of Mays Lading Village: pool, hot tub, basketball court, volleyball, playground, landscaping, sprinklers and snow removal. The association fee also includes water and sewer. Mays Landing Village is conveniently located to the GSP, Atlantic City Expressway, shopping. Octoberfest themed Open house Saturday, October 19th from 11 a.m. until 1 p.m. Refreshments and giveaways. Hope to see you there!

### PROPERTY DETAILS

Exterior	ParkingGarage	OtherRooms	InteriorFeatures
Brick	None	Dining Area Primary BR on 1st floor	Master Bath
Heating Forced Air Gas-Natural	Cooling Central	HotWater Gas	Water Public Water

**SALE**

**BADER-COLLINS ASSOCIATES**  
 "THE TEAM YOU CAN TRUST"

**BERGER REALTY**  
 3160 Asbury Avenue

**BADERCOLLINS.COM**

Ask for Bader - Collins Associates  
 Berger Realty Inc  
 3160 Asbury Avenue, Ocean City  
 Call: 609-399-0076  
 Email to: bca@bergerrealty.com  
 http://www.BADERCOLLINS.com

