



308 Shadeland Ave  
 Pleasantville, NJ 08232

Asking \$329,650.00

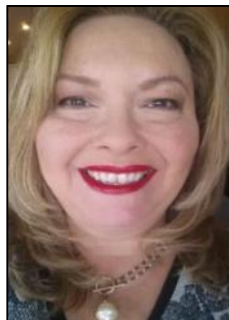


### COMMENTS

Welcome to Your New Home! Spacious 4-Bedroom on a Double Lot with Subdivision Potential Discover this charming 2-story, 4-bedroom, 2-bath home, perfectly situated on a generous double lot with exciting subdivision possibilities. With 3 bedrooms upstairs and a versatile 4th bedroom on the main floor, this home is designed to accommodate your family's needs or provide a comfortable guest space. The expansive yard offers abundant space that is ideal for landscaping, construction, or other business operations, providing the flexibility to store equipment, vehicles, or supplies. Whether you're running a business from home or simply need extra space for hobbies, the possibilities are vast. You can also envision creating your own backyard oasis, complete with gardens, outdoor living areas, or even recreational spaces for family and friends to enjoy. Inside, the open-concept living area is inviting and perfect for relaxation and entertaining, while the full basement offers plenty of storage or room for future expansion. Located on a peaceful dead-end street, you'll appreciate the privacy and tranquility this neighborhood provides. Whether you're seeking a spacious family home or a smart investment opportunity, this property is a unique find with great potential!

### PROPERTY DETAILS

| Exterior | OutsideFeatures              | ParkingGarage | OtherRooms  |
|----------|------------------------------|---------------|-------------|
| Aluminum | Deck<br>Fenced Yard<br>Porch | None          | Dining Area |



Asker for Theresa Medina  
 609-399-0076  
 Berger Realty Inc  
 3160 Asbury Avenue, Ocean City  
 Call: 609-399-0076  
 Email to: tam@bergerrealty.com

Water  
 Public

