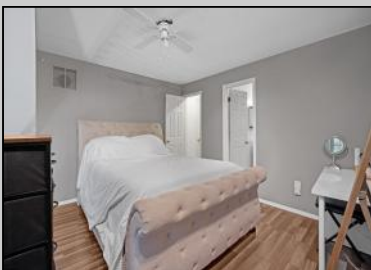




2617 Boulder
 Mays Landing, NJ 08330

Asking \$245,000.00



COMMENTS

Updated Townhome at Timber Glenn. This home features a 1st fl master bedroom and bath. Bonus 2nd fl loft bedroom with 2nd bath. Living room with dining area. Galley style kitchen with newer stainless steel appliances and tiled back splash. Easy to care for laminate floors. Great room with cathedral ceilings and recessed lighting . Ample closet space. The 2nd floor loft can be used as a 2nd bedroom or living room . Newer Full sized washer and dryer, Newer gas heat and central air. Great end unit location with private front porch. Pet friendly association includes a clubhouse with pool, and more. Schedule your personal tour today

PROPERTY DETAILS

Exterior Vinyl	ParkingGarage See Remarks	OtherRooms Dining Area Primary BR on 1st floor	InteriorFeatures Cathedral Ceiling(s) Master Bath Pets Allowed
Heating Forced Air Gas-Natural	Cooling Central	Water Public Water	Sewer Public Sewer

