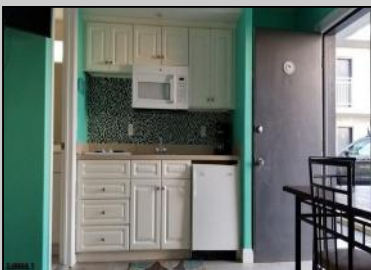




**900 Wesley**  
**Ocean City, NJ 08226**

**Asking \$268,999.00**



SJSRMLS

### COMMENTS

Centrally located efficiency unit in the heart of downtown Ocean City within walking distance to the beach, boardwalk, restaurants, and stores. This unit features a queen bed, pull out sofa, and an updated kitchenette with a refrigerator, microwave, and electric cook top. The property features a pool, sundeck, off-street parking, and an on-site laundry facility. Make this property your 2nd home or use it for a great investment.

### PROPERTY DETAILS

Exterior Masonry/Block	ParkingGarage None	OtherRooms Dining Area	Heating Baseboard Electric
Cooling Ceiling Fan(s) Wall Units	HotWater Electric	Water Public Water	Sewer Public Sewer



Ask for Jeff Thompson  
 Berger Realty Inc  
 3160 Asbury Avenue, Ocean City  
 Call: 609-399-0076  
 Email to: jst@bergerrealty.com

