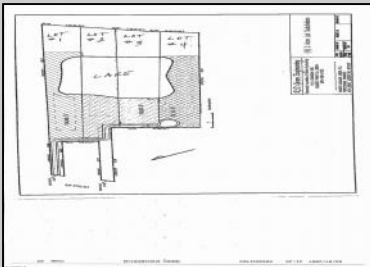
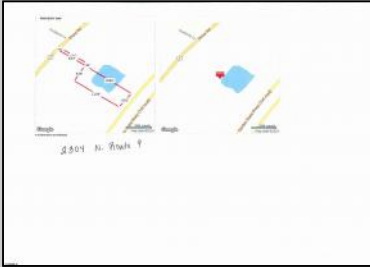




2304 Route 9
Cape May Court House, NJ 08210

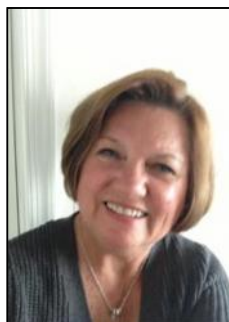
Asking \$899,900.00



COMMENTS

Potential Development Opportunity! Two adjacent Lots Available in Dennis Twp. 2304 and 2316 N. Route 9, approximately 21 acres with a pond on the property. Within a few miles to Avalon, Sea Isle and Stone Harbor. All approvals, inspections and applications needed are the responsibility of the buyer.

PROPERTY DETAILS



Ask for Linda Watts
Berger Realty Inc
1670 Boardwalk, Ocean City
Call: 609-391-0500
Email to: ljw@bergerrealty.com

