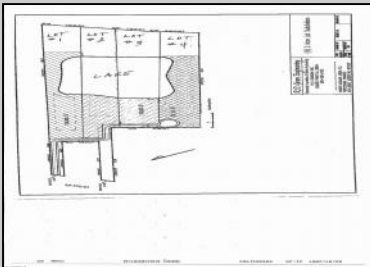
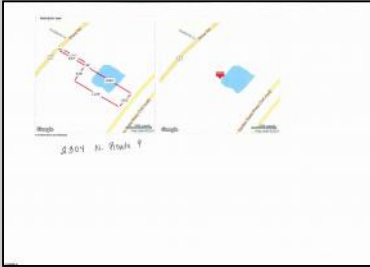




2304 Route 9  
Cape May Court House, NJ 08210

Asking \$899,900.00



#### COMMENTS

Potential Development Opportunity! Two adjacent Lots Available in Dennis Twp. 2304 and 2316 N. Route 9, approximately 21 acres with a pond on the property. Within a few miles to Avalon, Sea Isle and Stone Harbor. All approvals, inspections and applications needed are the responsibility of the buyer.

#### PROPERTY DETAILS



Ask for Dave Zelinski  
Berger Realty Inc  
1330 Bay Avenue, Ocean City  
Call: 609-391-1330  
Email to: djz@bergerrealty.com

