



**408 BETHEL ROAD**  
**Somers Point, NJ 08244**

**Asking \$195,000.00**



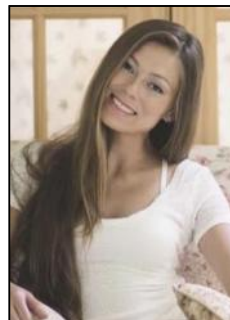
SJSRMLS

**COMMENTS**

GREAT SOMERS POINT LOCATION IN POINT COMMONS! 1920 SQ FT 2ND FLOOR LOCATION FOR PROFESSIONAL OR MEDICAL OFFICES IS READY TO OCCUPY WITH 2 WAITING ROOMS, CONFERENCE ROOM, 4 OFFICE OR EXAM ROOMS, KITCHEN, 2 RESTROOMS, ELEVATOR, 2 STAIRCASES AND MORE! OUTSTANDING CENTRAL SOMERS POINT LOCATION MINUTES FROM PRIME MAINLAND COMMUNITIES AND SHORE TOWNS!

**PROPERTY DETAILS**

Exterior Frame/Wood	OutsideFeatures Security Light/System Sign	ParkingGarage 11 or More Spaces	InteriorFeatures Elevator Pass Restroom Storage
Heating Electric	Cooling Central	HotWater Electric	Water Public
Sewer Public Sewer			



Ask for Margarita Kobilianets  
 Berger Realty Inc  
 3160 Asbury Avenue, Ocean City  
 Call: 609-399-0076  
 Email to: mak@bergerrealty.com

