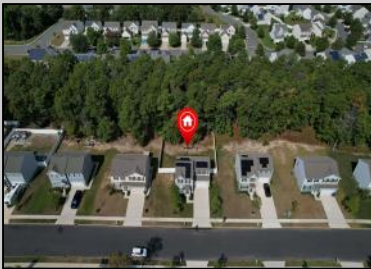




78 Galleria Dr
 Mays Landing, NJ 08330

Asking \$435,000.00



COMMENTS

Check out this new listing alert for the "Aspen model" in Mays Landing. This three-bedroom, 2.5-bathroom home offers a comfortable living space, a relaxing backyard, and serene natural surroundings. You'll instantly feel at home as you enter the beautiful living room. The first floor has an open-concept layout with a cozy kitchen featuring granite countertops, a center island and SS appliances, a gas range, dishwasher, microwave, and refrigerator. There's also a powder room tucked off the first floor for convenience and an indoor garage entry area. Upstairs, all three bedrooms are spacious and have ample closets, with extra finished storage near the stairs. The separate laundry room with a washer and dryer provides convenience. The master suite is very spacious, with a private bathroom and a huge walk-in closet. The full basement with high ceilings is ready to be finished for extra living space. The fenced backyard is private and spacious, with enough room for a potential in-ground pool. There is a two-car garage and additional parking space in front of it. Solar panels for much lower electric bills and the solar is leased with monthly payments of \$111.63.

PROPERTY DETAILS

Exterior Vinyl	OutsideFeatures Curbs Fenced Yard Sidewalks	ParkingGarage Two Car	OtherRooms Laundry/Utility Room Pantry
Gas-Natural	AppliancesIncluded Dishwasher Dryer Gas Stove Microwave Refrigerator Washer	AlsoIncluded None	Basement Full
	Cooling Central Electric	HotWater Gas	Public



Call for John Sweaney
 Berger Realty Inc
 3160 Asbury Avenue, Ocean City
 Call 609-399-0076
 Email to: jjs@bergerrealty.com



Sewer
 Public Sewer