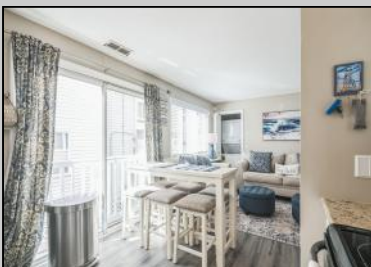


Berger Realty

Since 1920



Berger Realty, Inc.
3160 Asbury Avenue
Ocean City, NJ 08226
1-877-237-4371 / 609-399-0076
info@bergerrealty.com



221 87th St
Sea Isle City, NJ 08243

Asking \$595,000.00



COMMENTS

Plan your escape to Sea Isle City! This cozy, newly renovated, and well-maintained Townsend's Inlet condo features two bedrooms and one bath, blending style and function seamlessly. Leave your car in the off-street dedicated parking space and enjoy a short walk to the beach, bay, restaurants, markets, and food shops. The seasonally guarded 85th Street beach is conveniently close to public restrooms and a popular food cart. After a day at the beach, rinse off in the newly renovated outdoor showers before spending quality family time in your condo. In the evening, take advantage of the proximity to several popular restaurants, stroll to the ice cream shop for dessert, and enjoy fabulous bay view sunsets. Experience the best of Sea Isle City in Townsend's Inlet. Call today to schedule your personal tour!

PROPERTY DETAILS

ParkingGarage	Heating	Cooling	Water
None	Electric	Central	Public Water
	Forced Air		
Sewer			
Public Sewer			



Ask for Mary Kuchka
Berger Realty Inc
3160 Asbury Avenue, Ocean City
Call: 609-399-0076
Email to: mk@bergerrealty.com

