

Berger Realty

Since 1928



Berger Realty, Inc.
3160 Asbury Avenue
Ocean City, NJ 08226
1-877-237-4371 / 609-399-0076
✉ info@bergerrealty.com



668 New Road
Somers Point, NJ 08244

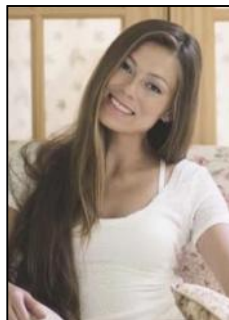
Asking \$650,000.00



COMMENTS

Prime corner location on Route 9 in Somers Point, NJ. This retail property, built in 1965, features a service station with a two-bay garage and gas station. The building offers a gross leasable area of 1,564 SF on a single floor and is set on 0.43 acres. It includes 15 surface parking spaces and is zoned HC-1. The property is currently vacant and presents various opportunities. The sale is on an AS-IS basis, and the buyer will be responsible for obtaining any necessary certificates for occupancy.

PROPERTY DETAILS



Ask for Margarita Kobilianets
Berger Realty Inc
3160 Asbury Avenue, Ocean City
Call: 609-399-0076
Email to: mak@bergerrealty.com

