

# Berger Realty

Since 1928

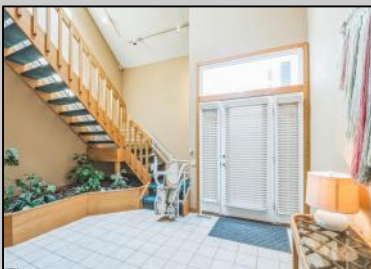


Berger Realty, Inc.  
 3160 Asbury Avenue  
 Ocean City, NJ 08226  
 1-877-237-4371 / 609-399-0076  
 info@bergerrealty.com



2435 Wesley Avenue  
 Ocean City, NJ 08226

Asking \$4,150,000.00



### COMMENTS

One of the very best beachfront gems of the Gold Coast in Ocean City. This location is unsurpassed when it comes to beachfront properties! Situated in this sought after location, 2435 Wesley is an iconic property in an iconic location. Sitting out further than almost any other property along the beach gives this 2nd floor beauty some of the best beach and ocean views on the island. Encompassing 3,000 square feet of living space with an expansive and open living and kitchen area with nearly floor to ceiling windows that provides incredible ocean views and floods the inside with natural light. Featuring 4 large bedrooms, including a huge primary suite with a walk-in shower and soaking tub. To own in this location is a once in a lifetime opportunity. This is one of only two duplexes located on an other wise single family zoned block with the nicest beach front properties on both sides. Direct access to the beach from the back yard with a huge ocean facing deck giving miles and miles of ocean views. Another property like this and with it's sought after location likely will not become available for a very long time. Contact listing agent for details and showings.

### PROPERTY DETAILS

Exterior	ParkingGarage	OtherRooms	InteriorFeatures
Stucco	Attached Garage	Dining Area	Cathedral Ceiling(s)
Wood	Auto Door Opener	Eat In Kitchen	Fireplace(s)
	Two Car	Great Room	Foyer
		Laundry/Utility Room	Handicap Features
			Master Bath
			Pets Allowed
			Skylight



Public Sewer

Ask for George Cash  
 Berger Realty Inc  
 3160 Asbury Avenue, Ocean City  
 Call: 609-399-0076  
 Email to: gbc@bergerrealty.com  
 Central Gas

