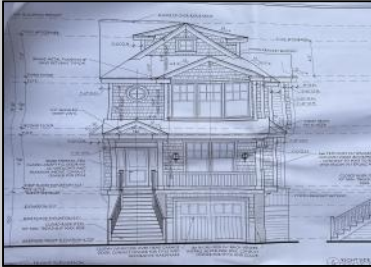


Berger Realty

Since 1928



Berger Realty, Inc.
3160 Asbury Avenue
Ocean City, NJ 08226
1-877-237-4371 / 609-399-0076
info@bergerrealty.com



136 Crescent
Ocean City, NJ 08226

Asking \$1,299,000.00



COMMENTS

Plans are available for a 4 Bedroom Single Family home up to approximately 3,000 square feet.

PROPERTY DETAILS

ParkingGarage	Heating	Water	Sewer
None	None	Public	Public Sewer



Ask for Tanya Pinkerton
Berger Realty Inc
3160 Asbury Avenue, Ocean City
Call: 609-399-0076
Email to: tp@bergerrealty.com

