

# Berger Realty

Since 1928

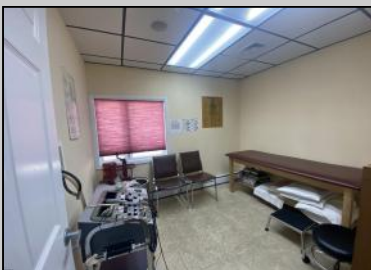
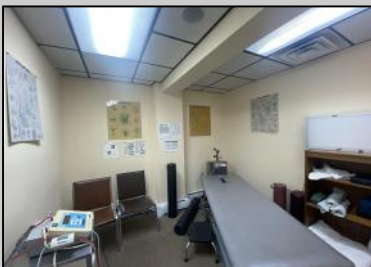
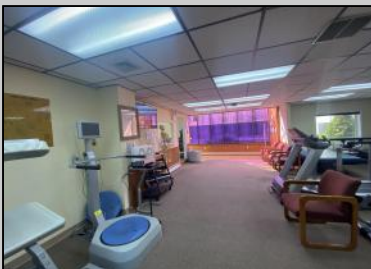


Berger Realty, Inc.  
3160 Asbury Avenue  
Ocean City, NJ 08226  
1-877-237-4371 / 609-399-0076  
info@bergerrealty.com



2406 New Rd  
Northfield, NJ 08225

Asking \$345,000.00



## COMMENTS

This commercial building is in a highly sought-after location on a busy main road in Northfield's business district. Currently used as a rehab facility, it includes four exam rooms, a large open space, two washrooms, a kitchenette, two offices and storage. With three separate entrances, the building offers flexibility, allowing it to be divided for use by multiple businesses. Its location, combined with the practical layout, makes it an ideal investment opportunity in a bustling business area. Seller is motivated. Bring an offer. Seller would like to sell gym and rehab equipment separately.

## PROPERTY DETAILS

|  |  |                                 |  |
|--|--|---------------------------------|--|
| Exterior<br>Vinyl                                | OutsideFeatures<br>Security Light/System | ParkingGarage<br>6 to 10 Spaces | InteriorFeatures<br>Restroom<br>Smoke/Fire Alarm |
| Heating<br>Baseboard<br>Gas-Natural<br>Hot Water | Cooling<br>Central                       | HotWater<br>Gas                 | Water<br>Public                                  |

Sewer



Ask for Sean McGinnis  
Berger Realty Inc  
3160 Asbury Avenue, Ocean City  
Call: 609-399-0076  
Email to: smc@bergerrealty.com

