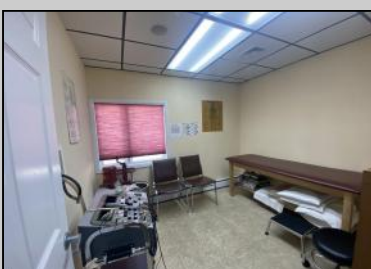
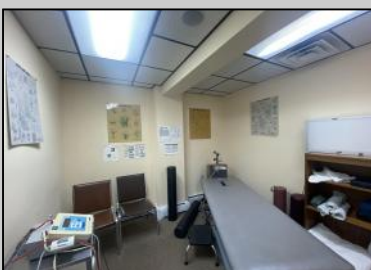
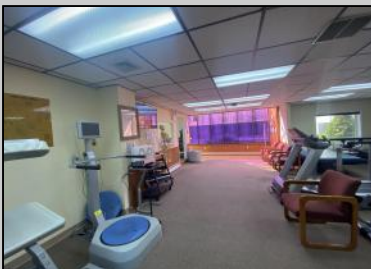




2406 New Rd
 Northfield, NJ 08225

Asking \$425,000.00



COMMENTS

This commercial building is in a highly sought-after location on a busy main road in Northfield's business district. Currently used as a rehab facility, it includes four exam rooms, a large open space, two washrooms, a kitchenette, two offices and storage. With three separate entrances, the building offers flexibility, allowing it to be divided for use by multiple businesses. Its location, combined with the practical layout, makes it an ideal investment opportunity in a bustling business area. Seller would like to sell gym and rehab equipment separately.

PROPERTY DETAILS

| | | | |
|--------------------------------------------------|------------------------------------------|---------------------------------|--------------------------------------------------|
| Exterior Vinyl | OutsideFeatures Security Light/System | ParkingGarage 6 to 10 Spaces | InteriorFeatures Restroom Smoke/Fire Alarm |
| Heating Baseboard Gas-Natural Hot Water | Cooling Central | HotWater Gas | Water Public |
| Sewer Public Sewer | | | |



Ask for Faith Camp-ODonnell
 Berger Realty Inc
 1330 Bay Avenue, Ocean City
 Call: 609-391-1330
 Email to: fco@bergerrealty.com

