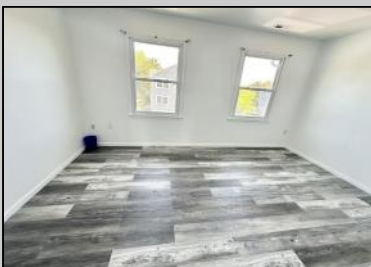




500 California Ave
 Pleasantville, NJ 08232

Asking \$209,900.00



COMMENTS

*****WELCOME HOME TO CALIFORNIA***** MUST BE CONVENTIONAL FINANCING WITH 10% OR MORE DOWN***** THIS RECENTLY SUBSTANTIALLY UPDATED 3 LEVEL END UNIT TOWNHOUSE ON THE ABSECON BORDER OFFERS A QUIET AND SERENE LOCATION ONE OF PVILLES BEST AREAS. FEATURES 2 BEDROOMS COULD BE A 3rd ON FIRST FLOOR 1.5 FULL BATHS AND LARGE UPPER OUTDOOR DECK. MINUTES TO CASINOS BOARDS AND WORLD-FAMOUS BEACHES PROFESSIONALLY PAINTED, NEW KITCHEN, NEW VINYL PLANK FLOORING THROUGHOUT NEW WINDOWS AND SO MUCH MORE. LOW TAXES, GREAT LOCATION AND REASONABLE HOA FEES MAKES THIS 3 STORY TOWNHOME A BEST BUY!

PROPERTY DETAILS

Exterior Vinyl	ParkingGarage None	OtherRooms Den/TV Room Dining Area	InteriorFeatures Pets Allowed
Heating Forced Air Gas-Natural	Cooling Central	HotWater Gas	Water Public Water



Ask for Tanya Pinkerton
 Berger Realty Inc
 3160 Asbury Avenue, Ocean City
 Call: 609-399-0076
 Email to: tp@bergerrealty.com

