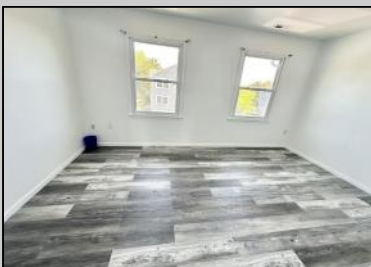




500 California Ave  
 Pleasantville, NJ 08232

Asking \$209,900.00



**COMMENTS**

\*\*\*\*\*WELCOME HOME TO CALIFORNIA\*\*\*\*\* MUST BE CONVENTIONAL FINANCING WITH 10% OR MORE DOWN\*\*\*\*\* THIS RECENTLY SUBSTANTIALLY UPDATED 3 LEVEL END UNIT TOWNHOUSE ON THE ABSECON BORDER OFFERS A QUIET AND SERENE LOCATION ONE OF PVILLES BEST AREAS. FEATURES 2 BEDROOMS COULD BE A 3rd ON FIRST FLOOR 1.5 FULL BATHS AND LARGE UPPER OUTDOOR DECK. MINUTES TO CASINOS BOARDS AND WORLD-FAMOUS BEACHES PROFESSIONALLY PAINTED, NEW KITCHEN, NEW VINYL PLANK FLOORING THROUGHOUT NEW WINDOWS ABD SO MUCH MORE. LOW TAXES, GREAT LOCATION AND REASONABLE HOA FEES MAKES THIS 3 STORY TOWNHOME A BEST BUY!

**PROPERTY DETAILS**

Exterior Vinyl	ParkingGarage None	OtherRooms Den/TV Room Dining Area	InteriorFeatures Pets Allowed
Heating Forced Air Gas-Natural	Cooling Central	HotWater Gas	Water Public Water



Ask for Michael Maina  
 Berger Realty Inc  
 3160 Asbury Avenue, Ocean City  
 Call: 609-399-0076  
 Email to: mai@bergerrealty.com

