



1930 Wesley
 Ocean City, NJ 08226

Asking \$2,990,000.00

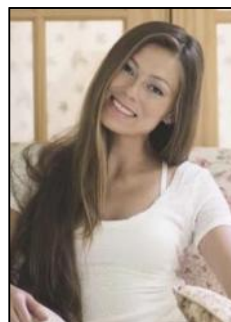


COMMENTS

LOCATION, LOCATION, LOCATION. ONE OF A KIND, GOLD-COAST, MULTI-FAMILY TRIPLEX ON A LARGE 50 X 120 LOT. TWO - 4bds, 1 1/2ba units plus bonus 2bd, 1ba garage apartment. 1/2 block from Gold Coast beach and boardwalk. Exceptional outdoor space and plenty of off street parking.

PROPERTY DETAILS

OutsideFeatures	ParkingGarage	Basement	Heating
Fenced Yard	Detached Garage	Crawl Space	Gas-Natural
Outside Shower	Two Car		Multi-Zoned
Porch			
Porch-Screened			
Sprinkler System			
Cooling	HotWater	Water	Sewer
Central	Gas	Public	Public Sewer
Multi-Zoned	Tankless-gas		



Ask for Margarita Kobilianets
 Berger Realty Inc
 3160 Asbury Avenue, Ocean City
 Call: 609-399-0076
 Email to: mak@bergerrealty.com

