

# Berger Realty

Since 1928



Berger Realty, Inc.  
3160 Asbury Avenue  
Ocean City, NJ 08226  
1-877-237-4371 / 609-399-0076  
info@bergerrealty.com



1930 Wesley  
Ocean City, NJ 08226

Asking \$2,990,000.00

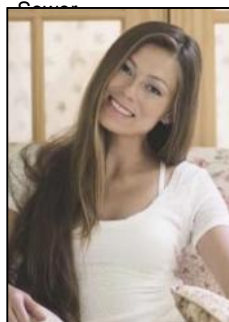


## COMMENTS

LOCATION, LOCATION, LOCATION. ONE OF A KIND, GOLD COAST - MULTI-FAMILY TRIPLEX ON A LARGE 50 X 120 LOT. TWO - 4bds, 1 1/2ba, units + 2bds, 1ba garage apartment. 1/2 Block from Gold Coast Beach and Boardwalk. Exceptional outdoor space and plenty of off street parking.

## PROPERTY DETAILS

Exterior Wood Shingle	OutsideFeatures Deck Enclosed Shower Fenced Yard Porch Porch Screened Sprinkler System	ParkingGarage Detached Garage Outside Two Car	AlsoIncluded Furnished
Basement Crawl Space	Heating Gas-Natural Multi-Zoned	Cooling Central Multi-Zoned	Water Public



Ask for Margarita Kobilianets  
Berger Realty Inc  
3160 Asbury Avenue, Ocean City  
Call: 609-399-0076  
Email to: mak@bergerrealty.com

