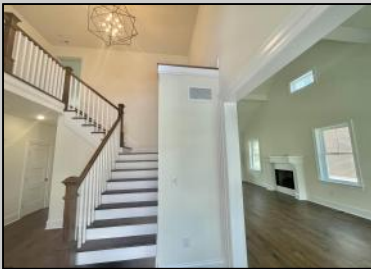




903 Maple Ave
Linwood, NJ 08221

Asking \$1,199,000.00



COMMENTS

BRAND NEW CUSTOM CONSTRUCTED FAMILY 2-story in Heart of Linwood. Centrally located on bike path w/oversized lot suitable for pool & much more. Only steps to Ballpark and straight shot to all 3 Linwood Award winning public schools. 5 bdrm, 4.5 bath, 9 ft. basement, 2-car garage and an elegant flowing floorplan make this among finest new construction ever offered in Linwood. Includes 3 private ensuite bedrooms (ONE ON FIRST FLOOR!). Large rear covered porch flowing from multiple room access, and balcony off MBR Suite Both enjoy cheerful SouthWest exposure!! Design, finishes, amenities and quality of materials and construction make this a value difficult to duplicate...and a location that suits its historically refined architecture!

PROPERTY DETAILS

Exterior	Outside Features	Parking Garage	Other Rooms
Vinyl	Curbs	Two Car	Breakfast Nook
	Deck	Attached Garage	Dining Room
	Porch		Eat In Kitchen
	Sidewalks		Great Room
	Sprinkler System		In-Law Quarters
			Laundry/Utility Room
			Pantry
			Storage Attic
			Primary BR on 1st floor

Interior Features
Kitchen Center Island
Storage
Walk In Closet

Appliances Included
Disposal
Dishwasher
Gas Stove
Refrigerator

Basement
Partial
Unfinished

Call: 609-399-4211
Email: wmb@bergerrealty.com

Cooling
Central
Multi-Zoned

Hot Water
Gas

Water
Public

Heating



Public Sewer