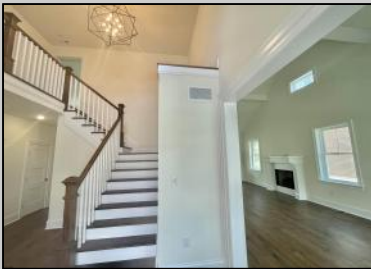




903 Maple Ave
Linwood, NJ 08221

Asking \$1,199,000.00



COMMENTS

BRAND NEW CUSTOM CONSTRUCTED FAMILY 2-story in Heart of Linwood. Centrally located on bike path w/oversized lot suitable for pool & much more. Only steps to Ballpark and straight shot to all 3 Linwood Award winning public schools. 5 bdrm, 4.5 bath, 9 ft. basement, 2-car garage and an elegant flowing floorplan make this among finest new construction ever offered in Linwood. Includes 3 private ensuite bedrooms (ONE ON FIRST FLOOR!). Large rear covered porch flowing from multiple room access, and balcony off MBR Suite Both enjoy cheerful SouthWest exposure!! Design, finishes, amenities and quality of materials and construction make this a value difficult to duplicate...and a location that suits its historically refined architecture!

PROPERTY DETAILS

| | | | |
|----------------|---|--|---|
| Exterior Vinyl | Outside Features Curbs Deck Porch Sidewalks Sprinkler System | Parking Garage Two Car Attached Garage | Other Rooms Breakfast Nook Dining Room Eat In Kitchen Great Room In-Law Quarters Laundry/Utility Room Pantry Storage Attic Primary BR on 1st floor |
|----------------|---|--|---|



Multi-Zoned

Ask for Lori McCloskey
Berger Realty Inc.
109 E 55th St., Ocean City
Call: 609-399-4211
Email: lam@bergerrealty.com
Refrigerator

Hot Water
Gas

Basement
Partial
Unfinished
Gas Above

Water
Public

Heating



Public Sewer