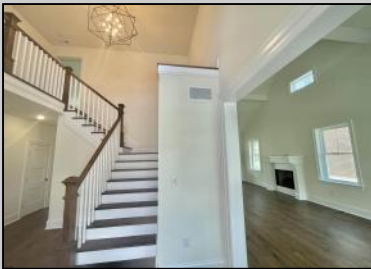




903 Maple Ave  
Linwood, NJ 08221

Asking \$1,199,000.00



### COMMENTS

BRAND NEW CUSTOM CONSTRUCTED FAMILY 2-story in Heart of Linwood. Centrally located on bike path w/oversized lot suitable for pool & much more. Only steps to Ballpark and straight shot to all 3 Linwood Award winning public schools. 5 bdrm, 4.5 bath, 9 ft. basement, 2-car garage and an elegant flowing floorplan make this among finest new construction ever offered in Linwood. Includes 3 private ensuite bedrooms (ONE ON FIRST FLOOR!). Large rear covered porch flowing from multiple room access, and balcony off MBR Suite Both enjoy cheerful SouthWest exposure!! Design, finishes, amenities and quality of materials and construction make this a value difficult to duplicate...and a location that suits its historically refined architecture!

### PROPERTY DETAILS

Exterior Vinyl	Outside Features Curbs Deck Porch Sidewalks Sprinkler System	Parking Garage Two Car Attached Garage	Other Rooms Breakfast Nook Dining Room Eat In Kitchen Great Room In-Law Quarters Laundry/Utility Room Pantry Storage Attic Primary BR on 1st floor
----------------	---	--	---



Multi-Zoned

Ask for John Andrews  
Berger Realty Inc.  
1670 Boardwalk, Ocean City  
Call: 609-391-0500  
Email: ja@bergerrealty.com

Hot Water Gas  
Water Public

Appliances Included  
Disposal  
Dishwasher  
Gas Above  
Refrigerator  
Basement Partial  
Unfinished

Heating



Public Sewer