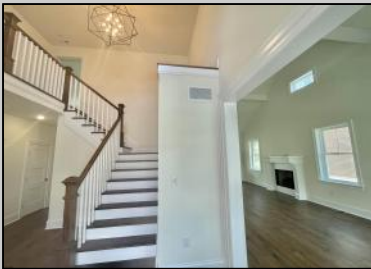




903 Maple Ave  
 Linwood, NJ 08221

Asking \$1,199,000.00



**COMMENTS**

BRAND NEW CUSTOM CONSTRUCTED FAMILY 2-story in Heart of Linwood. Centrally located on bike path w/oversized lot suitable for pool & much more. Only steps to Ballpark and straight shot to all 3 Linwood Award winning public schools. 5 bdrm, 4.5 bath, 9 ft. basement, 2-car garage and an elegant flowing floorplan make this among finest new construction ever offered in Linwood. Includes 3 private ensuite bedrooms (ONE ON FIRST FLOOR!). Large rear covered porch flowing from multiple room access, and balcony off MBR Suite Both enjoy cheerful SouthWest exposure!! Design, finishes, amenities and quality of materials and construction make this a value difficult to duplicate...and a location that suits its historically refined architecture!

**PROPERTY DETAILS**

Exterior Vinyl	Outside Features Curbs Deck Porch Sidewalks Sprinkler System	Parking Garage Two Car Attached Garage	Other Rooms Breakfast Nook Dining Room Eat In Kitchen Great Room In-Law Quarters Laundry/Utility Room Pantry Storage Attic Primary BR on 1st floor
----------------	---	--	---



Multi-Zoned

Ask for Faith Camp-O'Donnell  
 Berger Realty Inc  
 1330 Bay Avenue, Ocean City  
 Call: 609-391-1330  
 Email: fco@bergerrealty.com  
 Appliances Included  
 Dishwasher  
 Gas Stove  
 Refrigerator

Hot Water Gas  
 Water Public

Heating



Public Sewer