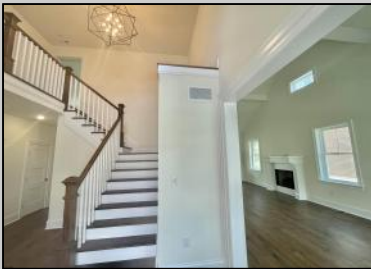




903 Maple Ave  
 Linwood, NJ 08221


Asking \$1,199,000.00



### COMMENTS

BRAND NEW CUSTOM CONSTRUCTED FAMILY 2-story in Heart of Linwood. Centrally located on bike path w/oversized lot suitable for pool & much more. Only steps to Ballpark and straight shot to all 3 Linwood Award winning public schools. 5 bdrm, 4.5 bath, 9 ft. basement, 2-car garage and an elegant flowing floorplan make this among finest new construction ever offered in Linwood. Includes 3 private ensuite bedrooms (ONE ON FIRST FLOOR!). Large rear covered porch flowing from multiple room access, and balcony off MBR Suite Both enjoy cheerful SouthWest exposure!! Design, finishes, amenities and quality of materials and construction make this a value difficult to duplicate...and a location that suits its historically refined architecture!

### PROPERTY DETAILS

|  |  |   |  |
|--|--|---|--|
| Exterior<br>Vinyl  | OutsideFeatures<br>Curbs<br>Deck<br>Porch<br>Sidewalks<br>Sprinkler System             | ParkingGarage<br>Two Car<br>Attached Garage | OtherRooms<br>Breakfast Nook<br>Dining Room<br>Eat In Kitchen<br>Great Room<br>In-Law Quarters<br>Laundry/Utility Room<br>Pantry<br>Storage Attic<br>Primary BR on 1st floor |
| InteriorFeatures<br>Kitchen Center Island<br>Storage<br>Walk In Closet | AppliancesIncluded<br>Disposal<br>Dishwasher<br>Gas Stove<br>Microwave<br>Refrigerator | Basement<br>Partial<br>Unfinished           | Heating<br><br>Public Sewer   |
| Cooling<br>Central<br>Multi-Zoned                                      | HotWater<br>Gas  | Water<br>Public                             |  |