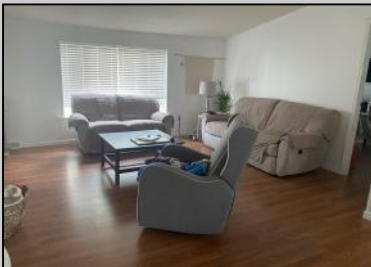




142 Maple
 Pleasantville, NJ 08232

Asking \$275,000.00



COMMENTS

NICE & COZY THREE BEDROOMS & TWO BATHS THE PROPERTY WAS RENOVATED FOUR YEARS AGO REPLACING HVAC, ROOF, BATHS, FLOORS, KITCHEN CABINETES, CO UNTERTOPS, WASHER, DRYER, REFRIGERATOR, DISHWASHER, DISPOSAL AND PAINT. BACK AND FRONT DECKS WERE UPDATED RECENTLY. TWO SHEDS ARE INCLUDED IN THE SALE. THE PROPERTY IS LOCATED ON A DEAD END STREET AND BIKE PATH, SHORT DISTANCE TO SOUTH MAIN STREET ELEMENTARY SCHOOL, BUSINESS AND ENTRANCE TO AC EXPRESS AND ROUTE 40. 10-15 MINUTS DRIVE TO ATLANTIC CITY CASINOS AND BEACHES. LA RELATED TO SELLER.

PROPERTY DETAILS

Exterior Vinyl	Outside Features Deck Fenced Yard Shed	Parking/Garage None	Other Rooms Breakfast Nook Dining Room Laundry/Utility Room
Appliances Included Dishwasher Disposal Dryer Gas Stove	Basement Crawl Space	Heating Forced Air Gas-Natural	Cooling Central



Ask for Lauren Greiner
 Berger Realty Inc
 3160 Asbury Avenue, Ocean City
 Call: 609-399-0076
 Email to: lmg@bergerrealty.com

