

Berger Realty

Since 1928

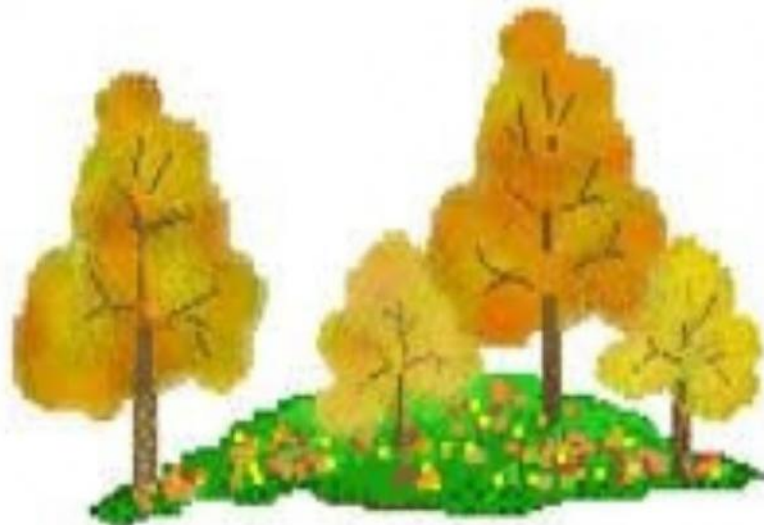


Berger Realty, Inc.
3160 Asbury Avenue
Ocean City, NJ 08226
1-877-237-4371 / 609-399-0076
✉ info@bergerrealty.com



2059 Ocean Heights
Egg Harbor Township, NJ 08234

Asking \$299,900.00



Land For Sale

SJSRMLS

COMMENTS

Great opportunity on highly visible road zoned NB (Neighborhood Business) Retail Center in neighborhood business zone high traffic corner location near high volume Super Wawa and 5 Points. Previous site plan approvals were obtained for Phase-1 8,5000 sq. ft. building with 46 parking spaces, Phase-2 6000 sq.ft. retail with 20 additional paved parking spaces. The storm water basin in Phase 1 has been sized to handle both Phase 1 and Phase 2. The previous site plans that were approved are available. The seller will sell subject to approvals (negotiable). Lot to be serviced by septic and well. Property has the possibility of being constructed in 2 phases.

PROPERTY DETAILS



Ask for Thomas Byrne
Berger Realty Inc
3160 Asbury Avenue, Ocean City
Call: 609-399-0076
Email to: tfb@bergerrealty.com

