

# Berger Realty

Since 1928



Berger Realty, Inc.  
3160 Asbury Avenue  
Ocean City, NJ 08226  
1-877-237-4371 / 609-399-0076  
✉ [info@bergerrealty.com](mailto:info@bergerrealty.com)



1520 Route 50  
Upper Township, NJ 08270

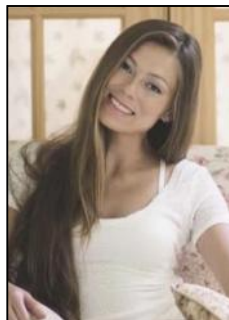
Asking \$230,000.00



#### COMMENTS

6.87 +/- acres. \$33,478.90/acre. Located in Tuckahoe, Upper Township in Cape May County, on the south side across from Dollar General and near Levari's Seafood & American Grille. Route 50 is a prominent route to the shore points of Ocean City, Strathmere & Sea Isle, with connections to Rt. 9 and Garden State Parkway. Call LA for details. Lots must be sold together

#### PROPERTY DETAILS



Ask for Margarita Kobilianets  
Berger Realty Inc  
3160 Asbury Avenue, Ocean City  
Call: 609-399-0076  
Email to: [mak@bergerrealty.com](mailto:mak@bergerrealty.com)

