

# Berger Realty

Since 1928



Ocean 17  
1670 Boardwalk  
Ocean City, NJ 08226  
609-391-0500

[oc17@BergerRealty.com](mailto:oc17@BergerRealty.com)



**23-27 Mays Landing Road  
Somers Point, NJ 08244**

**Asking \$2,695,000.00**



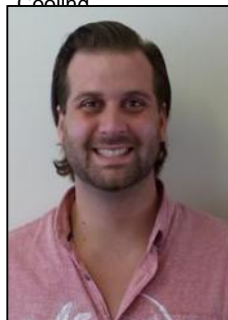
## COMMENTS

FANTASTIC INVESTMENT OPPORTUNITY - 3 Commercial properties for sale FULLY LEASED out to working businesses, including a large parking lot. GREAT RENTAL INCOME with over \$300,000 of rental income per year and to increase. This sale is for the land and buildings - businesses not included. Over 2.5 acres of land acres located in the federally approved OPPORTUNITY ZONE in a highly desirable area with high visibility, traffic volume, and easy access from local, county, and state roads. 10 rental units all leased, plenty of exterior parking, and approx. 900 contiguous feet of road frontage. Commercial spaces are currently used for retail, office/professional, and warehouse space and are a total of over 35,000 sq ft. Lease information available to interested qualified buyers. Properties being sold are 23 Mays Landing Road, 25 Mays Landing Road, & 27 Mays Landing Road. All rental properties with possibility of development. Total land area over 2.5 acres for all contiguous properties. Located in the Opportunity Zone - <https://nj.gov/governor/njopportunityzones/>

## PROPERTY DETAILS

Exterior	OutsideFeatures	ParkingGarage	InteriorFeatures
Stucco	Loading Dock	11 or More Spaces	Handicap Features
Vinyl	Storage Building	Off Street	Restroom
		Paved	Storage

Cooling



Ask for Colin Halliday  
Berger Realty Inc  
1670 Boardwalk, Ocean City  
Call: 609-391-0500  
Email to: [ceh@bergerrealty.com](mailto:ceh@bergerrealty.com)

