

Berger Realty

Since 1928



Berger Realty, Inc.
3160 Asbury Avenue
Ocean City, NJ 08226
1-877-237-4371 / 609-399-0076
info@bergerrealty.com



845 Seashore
North Cape May, NJ 08204

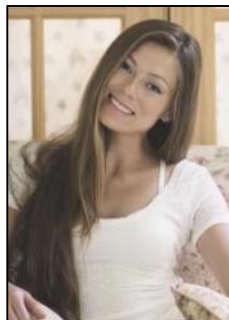
Asking \$225,000.00



COMMENTS

Incredible opportunity! Lot is zoned residential, build a single family but could be a great location for a commercial project with city approval. This land offers convenient access to local amenities and Cape May's renowned beaches. **Property lines are not exact and are for marketing purposes only**

PROPERTY DETAILS



Ask for Margarita Kobilianets
Berger Realty Inc
3160 Asbury Avenue, Ocean City
Call: 609-399-0076
Email to: mak@bergerrealty.com

