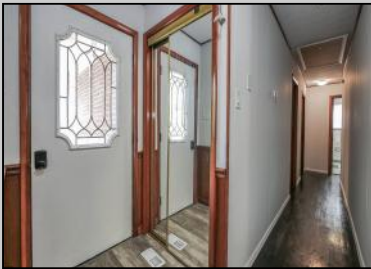




**609 Bainbridge
 Mays Landing, NJ 08330**

Asking \$371,000.00



COMMENTS

Welcome to this charming mid-century home nestled in the heart of Mays Landing! This cozy rancher boasts 4 bedrooms, 2 bathrooms, and a total of 2068 square feet of living space, all situated on a generous lot of approximately 33976 square feet. Upon entering, you'll be greeted by a spacious family room featuring a cozy gas fireplace, seamlessly flowing into the eat-in kitchen. The kitchen is equipped with sliders leading to a well-appointed deck, offering a picturesque view of the creek that joins up to Lake Lenape - a perfect spot for your morning coffee. This home features hardwood and LVP flooring, central air, forced hot air, and a convenient laundry area with a washer and dryer in unit. Additionally, the property includes an attached oversized two-car garage with an extra space that could serve as an office or additional storage. 609 Bainbridge Avenue is not just a home, but a retreat with endless potential. The property is walking distance to the Greater Egg Harbor River, local restaurants, shops, and the Atlantic County Bike Path, making it an ideal location for nature enthusiasts and outdoor lovers. To top it off, this home is joined by an approximately 3/4 acre lot, offering even more space and opportunities. With all these features and its prime location, this property is a must-see! Don't miss out on the chance to experience the tranquility and convenience of this home. Call today to schedule your private tour and envision the possibilities that await you at 609 Bainbridge Avenue.

PROPERTY DETAILS

Exterior	Outside Features Deck Hardwood Floors Patio	Parking/Garage Attached Garage 2 Car	Other Rooms Eat In Kitchen Laundry/Utility Room Primary BR on 1st floor
	Appliances Included Dishwasher Dryer Electric Stove Refrigerator	Basement	
	Call: 609-399-0076 Email: gmg@bergerrealty.com https://www.ocnj.com	Water: Public Sewer: Public Sewer	