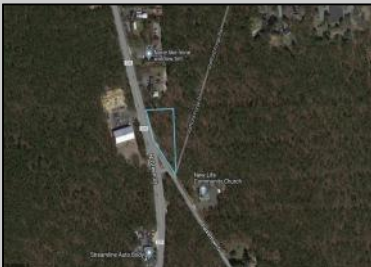
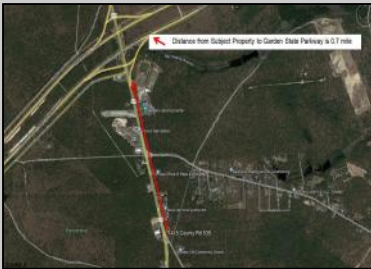


Berger Realty

Since 1928



Berger Realty, Inc.
3160 Asbury Avenue
Ocean City, NJ 08226
1-877-237-4371 / 609-399-0076
info@bergerrealty.com



1415 Route 539
Little Egg Harbor Township, NJ 08087

Asking \$99,000.00



SJSRMLS

COMMENTS

+/- 1.18 Acres Zoned General Business. Irregular shaped lot with +/- 310' of frontage along N Green Street (Route 539) & 219' of frontage along Parkertown Drive. Great location in a growing market with new commercial construction in the immediate area. This property has tremendous visibility and access, located 1 Mile from Garden State Parkway. Call for marketing package and survey. No current approvals in place.

PROPERTY DETAILS



Ask for Michael Maina
Berger Realty Inc
3160 Asbury Avenue, Ocean City
Call: 609-399-0076
Email to: mai@bergerrealty.com

