



193 Betsey Scull Rd
Egg Harbor Township, NJ 08234

Asking \$575,000.00



COMMENTS

Welcome to 193 Betsey Scull Road, Egg Harbor Township – a serene oasis situated in the heart of the township. This exquisite 3-bedroom, 2.5-bath residence rests on a meticulously landscaped 2.34-acre lot, featuring an array of fruit and vegetable plants that create a picturesque and private retreat. Additionally, the property boasts an overbuilt 36' x 60' pole barn. Upon entering this 2,244 square foot home, you are welcomed by a spacious foyer with gleaming hardwood floors that seamlessly transition into the formal dining room and living room, offering an elegant backdrop for both everyday living and entertaining. The newly renovated kitchen is a chef's delight, showcasing luxurious granite countertops, a custom tile backsplash, and modern fixtures that merge style and functionality. The kitchen features a stainless range hood, Thermador cooktop and oven, and Bosch dishwasher, ensuring a top-tier culinary experience. Additionally, the eat-in kitchen provides a cozy area for casual meals and morning coffee. Adjacent to the kitchen is a convenient laundry/utility room, an office suited for work-from-home needs, a powder room, and substantial storage space beneath the stairs. The second floor hosts three generously sized bedrooms and two full bathrooms. The primary bedroom serves as a sanctuary, complete with an ensuite bath and a walk-in closet, providing a private haven for relaxation. A delightful reading nook at the top of the stairs offers a cozy spot to unwind with a book, while the attic access provides ample additional storage space. The property's exterior features are equally impressive. The expansive 36' x 60' pole barn is a highlight, ideal for car enthusiasts, contractors, or hobbyists. With a 13' 6" interior ceiling height, a six-inch poured concrete floor with fiber-reinforced mesh, and 6000 psi strength that is burnished, silicone hardened, and sealed for ultimate durability, this barn is constructed to last. It is equipped with a 200 amp electrical panel, outlets every 12', and two large doors (10'x10' and 12'x12'), suitable for accommodating RVs, boats, and more. The outdoor space is designed for leisure and entertainment, featuring a substantial rear deck perfect for hosting gatherings or simply enjoying the serene surroundings. The stone driveway with a concrete parking pad provides ample parking for multiple vehicles, ensuring convenience for residents and guests. The two-car attached garage with an automatic garage door opener enhances the practicality and appeal of this remarkable property. 193 Betsey Scull Road offers a unique blend of comfort, style, and functionality, making it a rare find. This home caters to various needs and passions with its serene living environment, modern amenities, and versatile spaces. Seize the opportunity to make this extraordinary property your own.

PROPERTY DETAILS

Exterior	OutsideFeatures	ParkingGarage	OtherRooms
Vinyl	Deck	Attached Garage	Dining Room
	Shed	Auto Door Opener	Eat In Kitchen

Berger Realty

• Since 1928 •

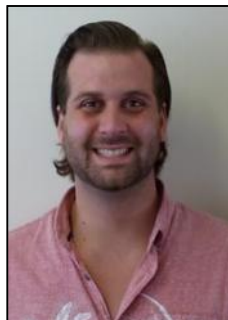


Ocean 17
1670 Boardwalk
Ocean City, NJ 08226
609-391-0500



✉ oc17@BergerRealty.com

		Detached Garage See Remarks Three or More Cars Two Car	Laundry/Utility Room Library/Study Storage Attic
InteriorFeatures	AppliancesIncluded	AlsoIncluded	Basement
Carbon Monoxide Detector	Dishwasher Dryer	Blinds	Crawl Space
Cathedral Ceiling	Gas Stove		
Kitchen Center Island	Microwave		
Smoke/Fire Alarm	Refrigerator		
Storage	Self Cleaning Oven		
Walk In Closet	Washer		
Heating	Cooling	HotWater	Water
Forced Air	Attic Fan	Gas	Private
Gas-Propane	Ceiling Fan(s)		Well
Multi-Zoned	Central		
	Multi-Zoned		
Sewer			
Private			
Septic			



Ask for Colin Halliday
Berger Realty Inc
1670 Boardwalk, Ocean City
Call: 609-391-0500
Email to: ceh@bergerrealty.com

