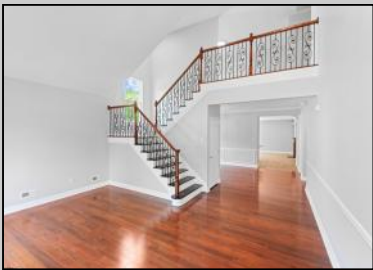


210 Lily
Egg Harbor Township, NJ 08234

Asking \$529,000.00



COMMENTS

LOVELY ON LILY!! One of the largest models in the community situated on a large corner lot this 3 Bedroom, 2.5 bath beauty is full of natural light showcasing the new flooring and fresh paint. The dining room with crown molding, a chair rail and wainscoting is perfect for holidays for the whole family. The first floor Master Bedroom features recessed lighting, a tray ceiling, a beautiful en-suite with soaking tub, a stand up shower and a large walk in closet. The kitchen has 42" cabinets, a center island, recessed lighting, granite counter tops and brand new SS appliances which opens to the family room with a gas fireplace and built ins. The sliding doors lead to your back patio with retractable awning to keep calm on those lazy summer nights. The second floor has it's own private living area, along with an additional good sized bedroom and full bath. Another perfect separate area for guests or adult children. Clean and move in ready with a fast closing possible, it's time to make your appointment today!!

PROPERTY DETAILS

Exterior Vinyl	OutsideFeatures Curbs Patio Sidewalks	ParkingGarage Two Car	OtherRooms Dining Room Eat In Kitchen Great Room Laundry/Utility Room Loft Pantry Primary BR on 1st floor Recreation/Family Storage Attic
InteriorFeatures Carbon Monoxide Detector Cathedral Ceiling Kitchen Center Island Security System Smoke/Fire Alarm Walk In Closet Whirlpool	AppliancesIncluded Burglar Alarm Dishwasher Disposal Gas Stove Microwave Refrigerator Self Cleaning Oven	Basement Slab	Heating Forced Air Gas-Natural
Cooling Central	HotWater Gas	Water Public	Sewer Public Sewer

Berger Realty

• Since 1928 •



Berger Realty, Inc.
3160 Asbury Avenue
Ocean City, NJ 08226
1-877-237-4371 / 609-399-0076
✉ info@bergerrealty.com



Ask for Theresa Maina
Berger Realty Inc
3160 Asbury Avenue, Ocean City
Call: 609-399-0076
Email to: tam@bergerrealty.com

