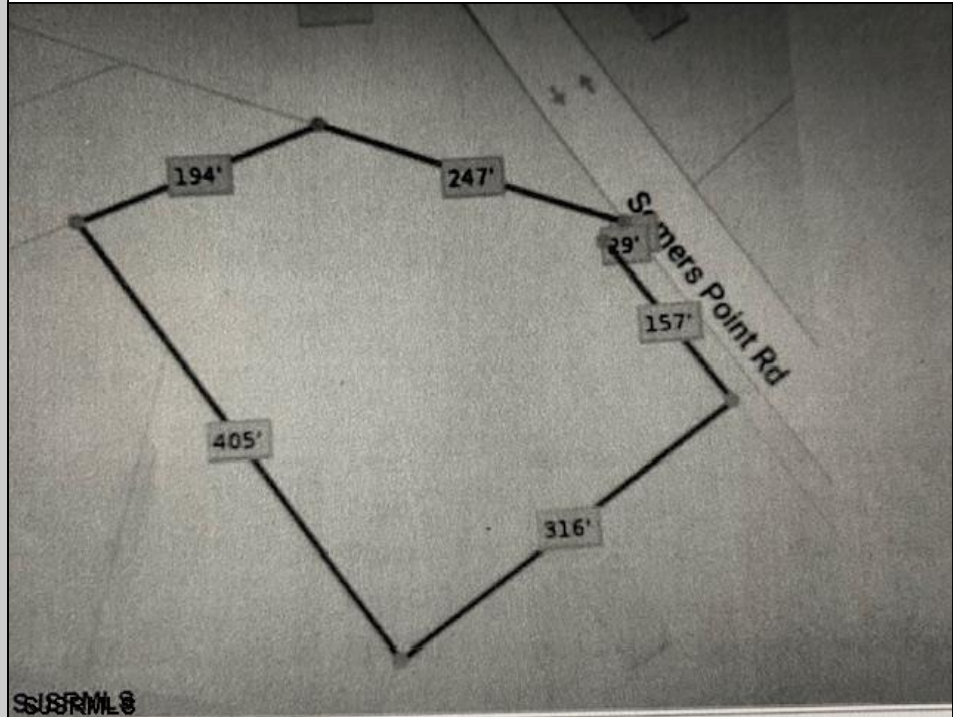
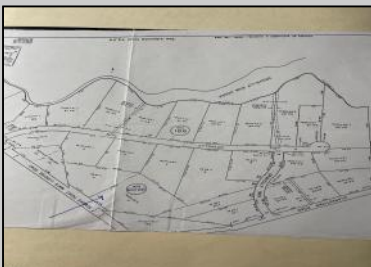




5067 Mays Landing Sp
Mays Landing, NJ 08330

Asking \$123,725.00



COMMENTS

2.53 acre. Last lot in the Forest Walk development. This lot is in CAFRA. Approved septic design for 4 BR single family home. Look at the Associated Doc. for more information. This is ASIS sale. Buyer is responsible to verify and obtain all permits.

PROPERTY DETAILS



Ask for Tara Crusser-Moss
Berger Realty Inc
3160 Asbury Avenue, Ocean City
Call: 609-399-0076
Email to: tcm@bergerrealty.com

