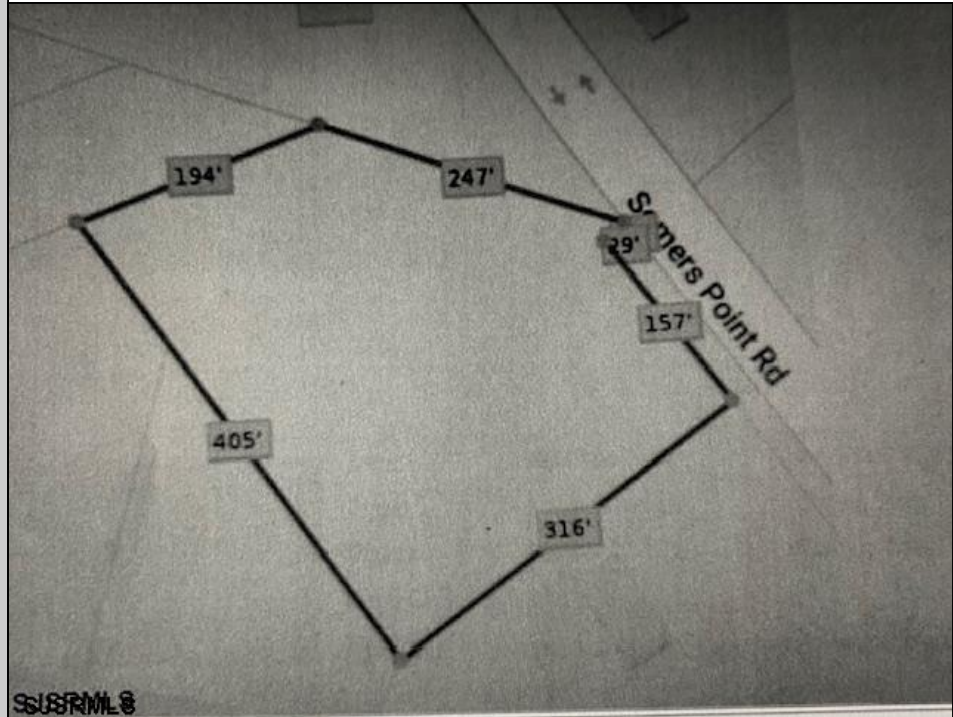
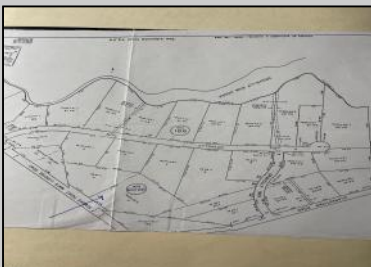




5067 Mays Landing Sp
Mays Landing, NJ 08330

Asking \$123,725.00



COMMENTS

2.53 acre. Last lot in the Forest Walk development. This lot is in CAFRA. Approved septic design for 4 BR single family home. Look at the Associated Doc. for more information. This is ASIS sale. Buyer is responsible to verify and obtain all permits.

PROPERTY DETAILS



Ask for Lori McCloskey
Berger Realty Inc
109 E 55th St., Ocean City
Call: 609-399-4211
Email to: lam@bergerrealty.com

