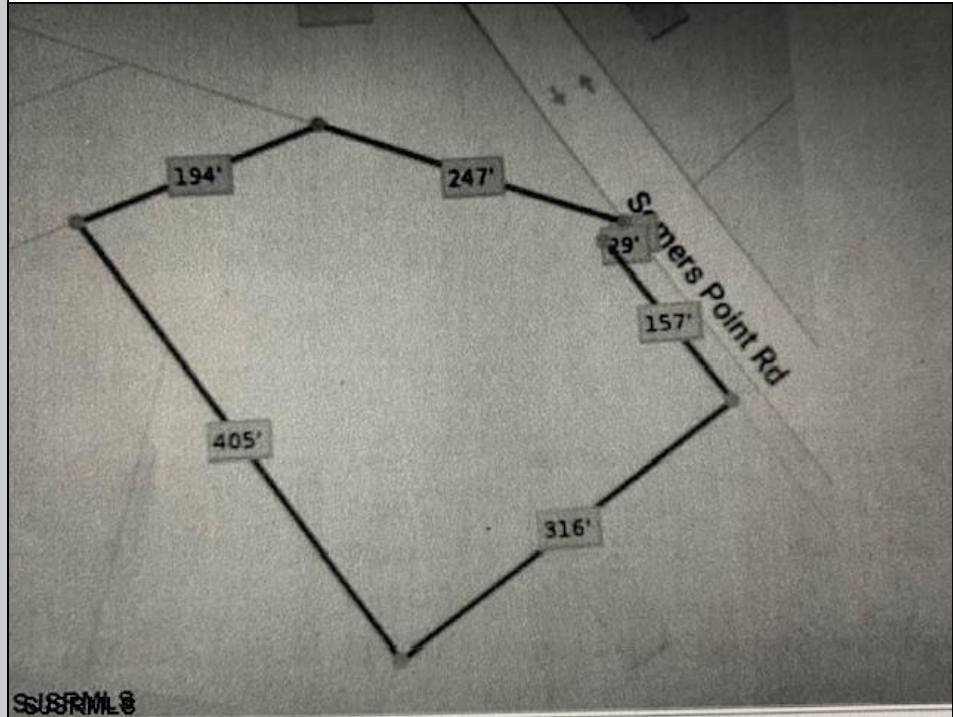




5067 Mays Landing Sp
Mays Landing, NJ 08330

Asking \$123,725.00



COMMENTS

2.53 acre. Last lot in the Forest Walk development. This lot is in CAFRA. Approved septic design for 4 BR single family home. Look at the Associated Doc. for more information. This is ASIS sale. Buyer is responsible to verify and obtain all permits.

PROPERTY DETAILS



Ask for Cassidy Fletcher
Berger Realty Inc
1330 Bay Avenue, Ocean City
Call: 609-391-1330
Email to: crf@bergerrealty.com

