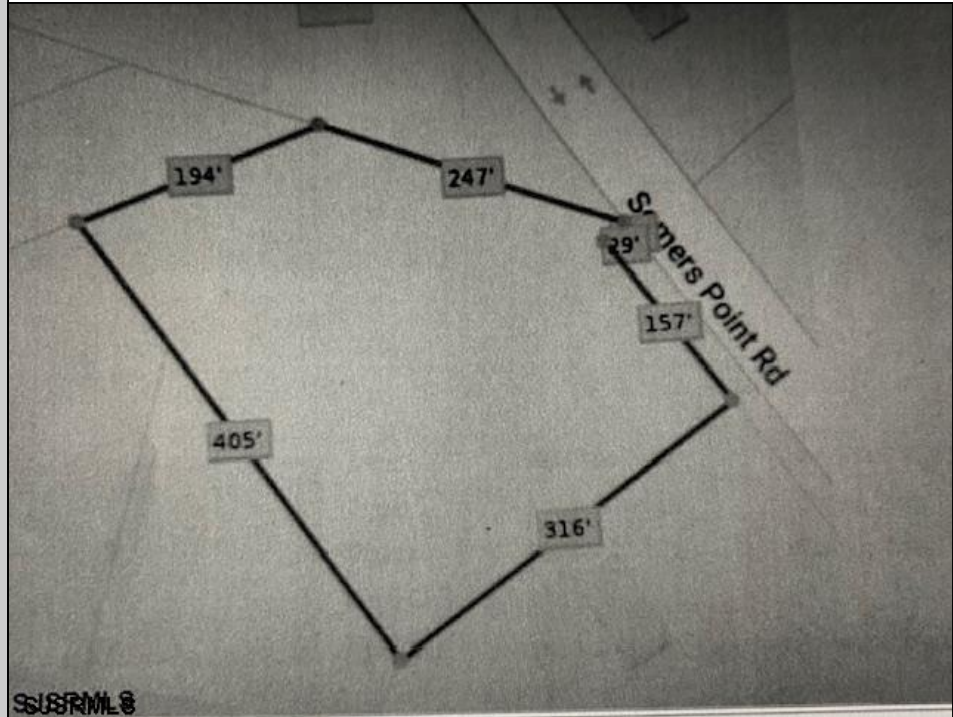
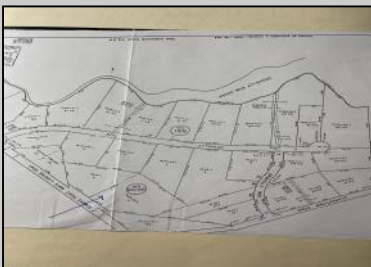




5067 Mays Landing Sp  
Mays Landing, NJ 08330

Asking \$123,725.00



### COMMENTS

2.53 acre. Last lot in the Forest Walk development. This lot is in CAFRA. Approved septic design for 4 BR single family home. Look at the Associated Doc. for more information. This is ASIS sale. Buyer is responsible to verify and obtain all permits.

### PROPERTY DETAILS



Ask for Cynthia Henes  
Berger Realty Inc  
109 E 55th St., Ocean City  
Call: 609-399-4211  
Email to: cah@bergerrealty.com

